

Global Health: Awareness and Compassion



Elisabeth Beels, RN

Collaborative learning
— Goshen College and
Nepali nursing students
during May term 2014

Special Feature!

Daniel Nafziger, MD

Perspective and update
on the Ebola outbreak
in West Africa

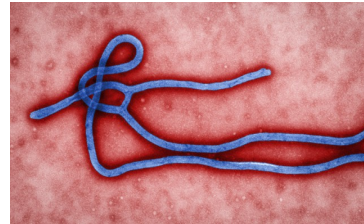
Thursday,

November 13, 2014

7:00 - 8:30 p.m.

College Mennonite Church

Goshen College Campus



**Everyone is invited, including healthcare
professionals and students from all disciplines!**

A reception will follow the presentation.

For more information, visit www.mennohealth.org,
email info@mennohealth.org
or call (888) 406-3643.

Global Health: Awareness and Compassion



Elisabeth Beels, RN

Collaborative learning
— Goshen College and
Nepali nursing students
during May term 2014

Special Feature!

Daniel Nafziger, MD

Perspective and update
on the Ebola outbreak
in West Africa

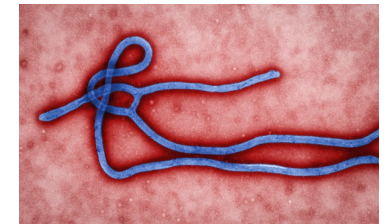
Thursday,

November 13, 2014

7:00 - 8:30 p.m.

College Mennonite Church

Goshen College Campus



**Everyone is invited, including healthcare
professionals and students from all disciplines!**

A reception will follow the presentation.

For more information, visit www.mennohealth.org,
email info@mennohealth.org
or call (888) 406-3643.