

Widening our views: The role of MHF

MHF Board and Staff

Paul Leichty, Executive Director

Beth Good, President

Laura Yoder, Vice-President



Mennonite
Healthcare
Fellowship



Mennonite
Healthcare
Fellowship

How we got where we are

A brief historical perspective



Mennonite
Healthcare
Fellowship



▶ Mennonite Medical Association



▶ Mennonite Nurses Association

- Formed in the 1940's
- Mutual support and fellowship as doctors and nurses
- Connected with missions movement



- ▶ Mennonite Medical Association

- ▶ Mennonite Nurses Association

- ▶ 2007 – Expanding the presence
- ▶ 2008 – Study Team formed
- ▶ 2009 – Study Team presented proposal



- ▶ Mennonite Medical Association
- ▶ Mennonite Nurses Association
- ▶ 2009 – Study Team proposal accepted
- ▶ 2009–2011 – Implementation Team
- ▶ June 2011 – Mennonite Healthcare Fellowship formed



Mennonite
Healthcare
Fellowship



Mennonite
Healthcare
Fellowship

- June 2011
MHF begins at final
MMA-MNA
Convention
- Summer 2011
Executive Director
hired, begins
September 1

Major expenses in transition

- **Legal** - Re-name “Mennonite Nurses Association” to Mennonite Healthcare Fellowship
- **Consultation** - Coordination of the work of the Implementation Team.
- **Marketing** - Create promotional materials and advertise the new organization.



Legal entities that funded MHF

1. Mennonite Nurses Association (MNA) -- legal entity renamed. **Fund depleted in transition.**
2. Mennonite Medical Association (MMA) -- Operating fund that paid for most of the transition. **Fund depleted in transition.**
3. Mobilization for Mission Fund (MFM) -- Separate legal entity controlled by MMA. **About \$40,000 transferred to MHF.**



Estimated replenishment levels

To restore the Mobilization for Mission Fund to 2010 levels in round numbers at the end of each fiscal year.

- August 31, 2012 - \$40,000
- August 31, 2013 - \$20,000 (after Healthy Future Campaign)
- August 31, 2014 - \$20,000
- August 31, 2015 - \$30,000 (after fiscal year deficit)



2011-12
First full fiscal year

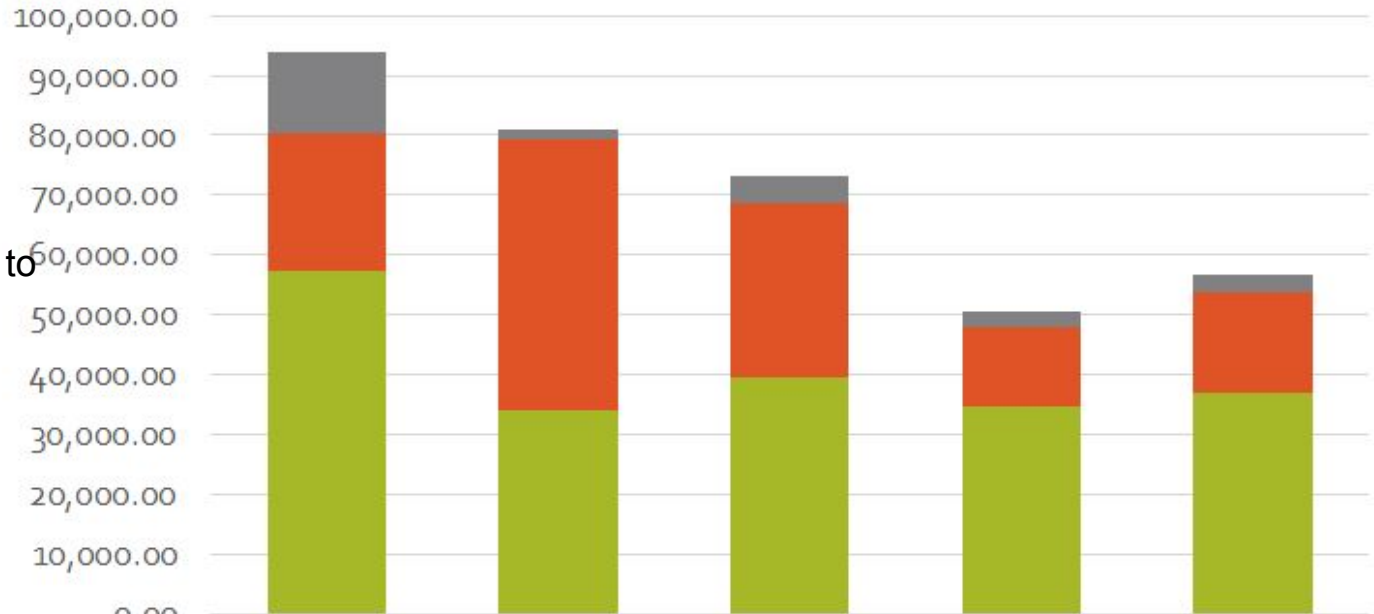
2012-13
Healthy Future Campaign

2013-14
Special end of year appeal to a limited group of donors

2014-15
No special appeal

2015-16
Special mid-year appeal

MHF Contributions Income by Fiscal Year



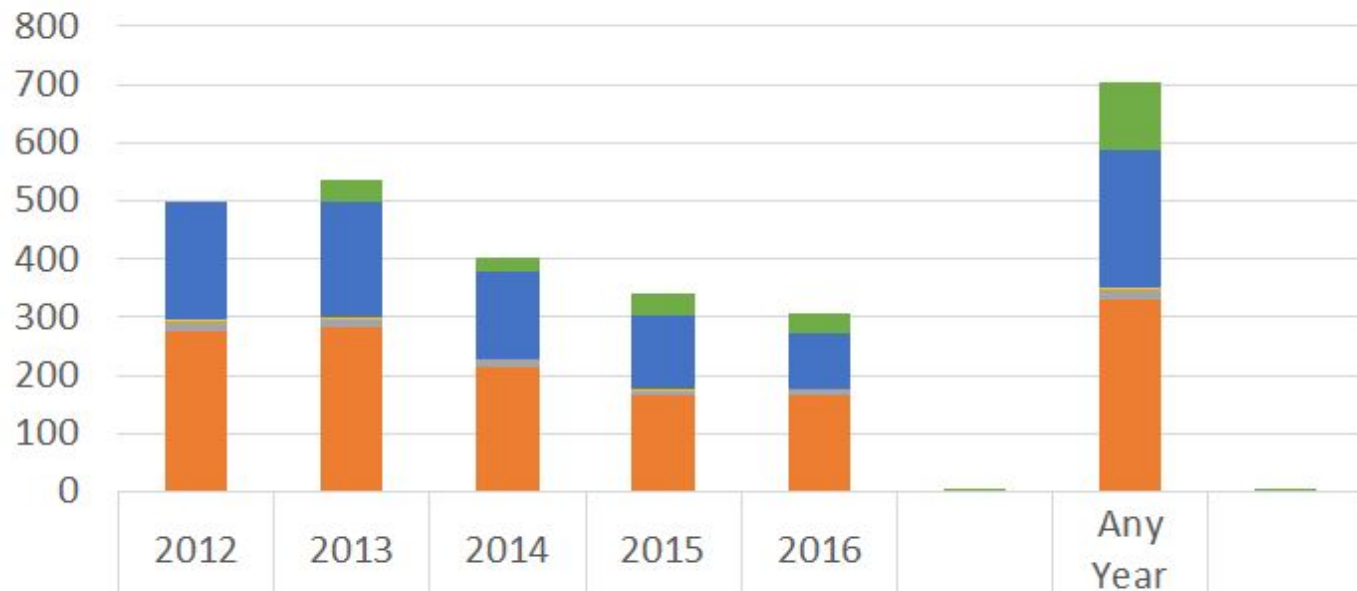
	2011-12	2012-13	2013-14	2014-15	2015-201605
■ MFM	\$13,615.00	\$1,563.43	\$4,552.02	\$2,410.00	3,030.00
■ Contributions	22,823.00	45,478.00	28,865.57	13,393.87	16,900.00
■ Membership Dues	57,451.00	33,960.00	39,715.00	34,670.00	36,930.00



MHF Membership by Profession

Since 2012-13 membership has declined each year.

However, the data shows that around 700 persons have been members at some point in the 5 year period.



Summary

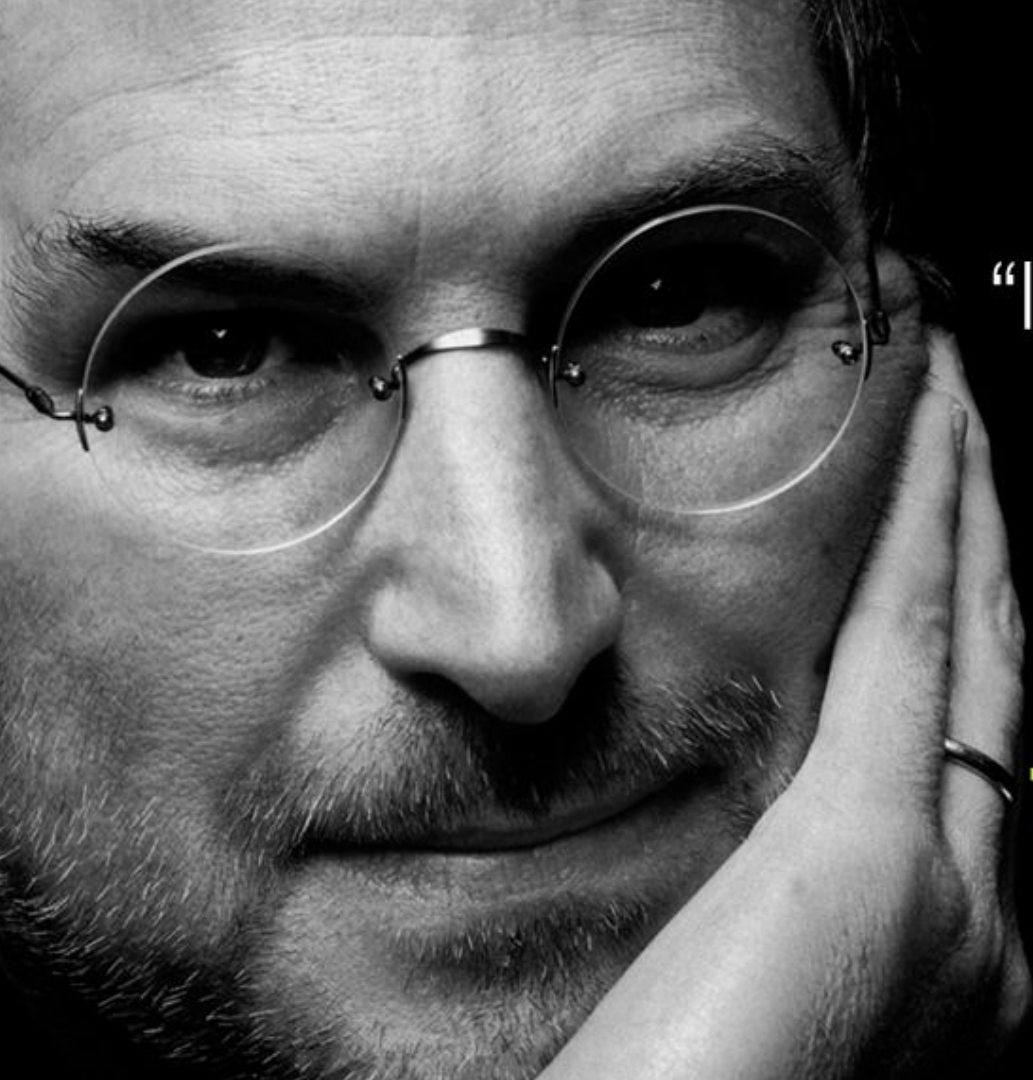
Previous members of MMA and MNA **have interest in MHF, but...**

- No longer steady in their yearly giving.
- Dropping out due to age or death.

MHF is **attracting new members, but...**

- Not what was projected in variety of professions
- Not enough in 20's and 30's.
- Not enough to offset the attrition.





“If you are working on something exciting that you really care about, **you don't have to be pushed. The vision pulls you.**”

Options for thriving

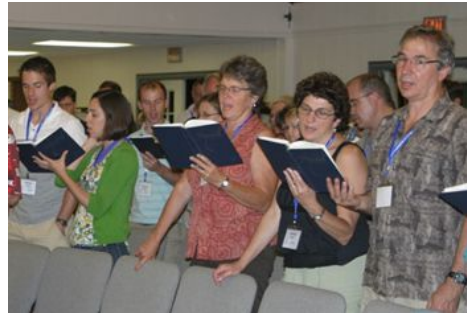
- Consolidated Assets
- Living into our present trends
- Explore partnerships



Consolidated Assets

- Strengthen MHF commitment to mission & education
- Current and future funding support the mission of MHF
- Include operation costs related to MHF mission

Living into Present Trends



Explore Partnerships



Mennonite
Healthcare
Fellowship

Strategic Planning & The Conversations Initiative



Mennonite
Healthcare
Fellowship

Strategic Planning and The Conversations Initiative

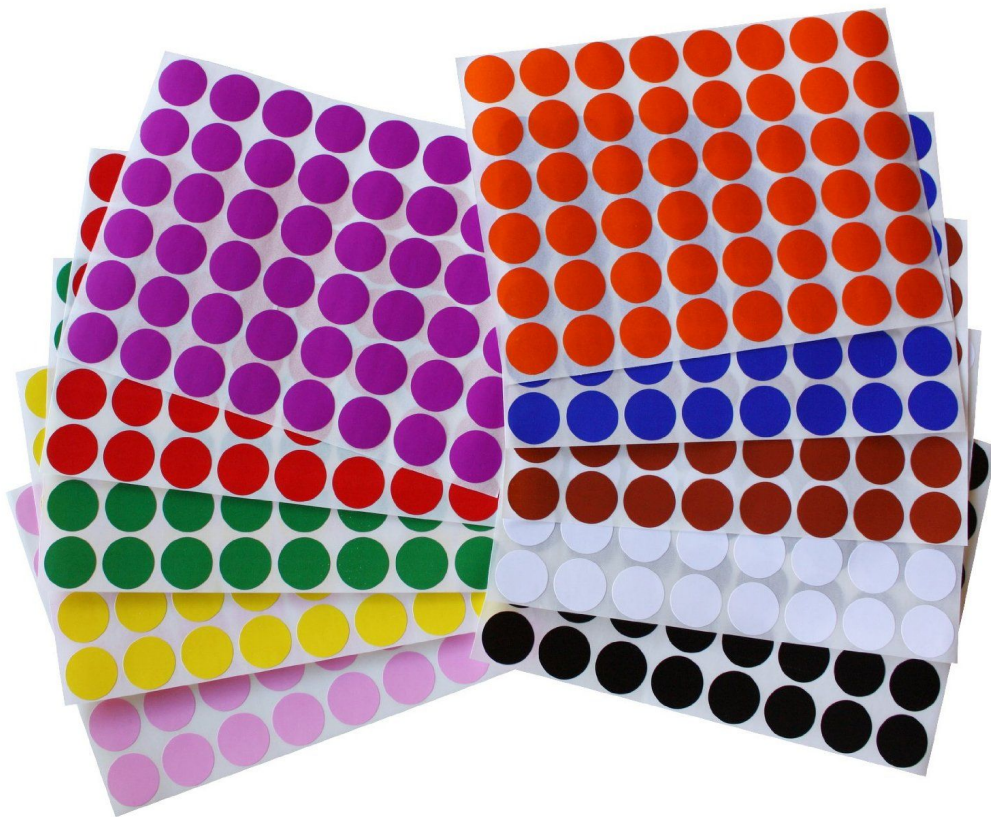
- Strategic Planning meeting on October 10, 2015
- Conversations Initiative
 - Current work experiences
 - Vocational journey
 - Identity as a Christian and healthcare worker
 - Processing current opportunities and challenges



Questions for group discussion and contemplation...

- What means and resources are most useful to you in processing issues related to faith and work?
- How important is it for you to hear from a Christian Anabaptist perspective in addressing the challenges and opportunities you face? Why?
- What ONE or TWO themes emerge from your group?

We want to hear from you



Mennonite
Healthcare
Fellowship